



CHATTERTON | REES



11c Cornwall Crescent

, London, W11 1PH

£2,275 Per month



1



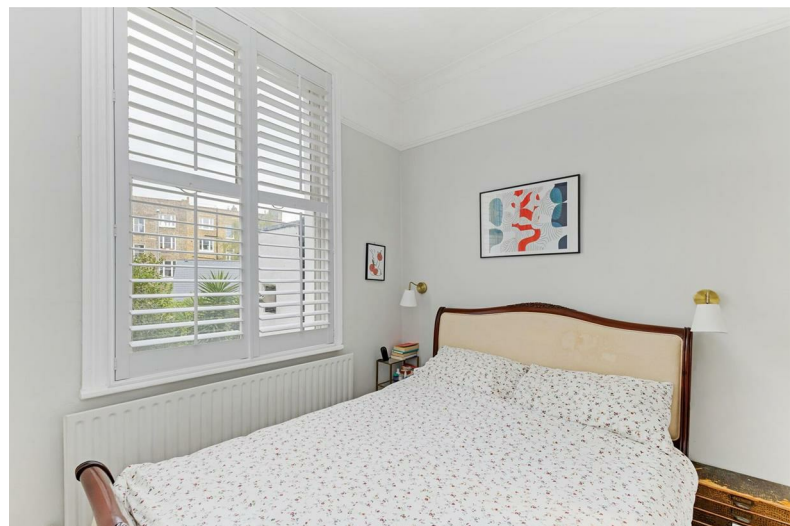
1



1



11c Cornwall Crescent

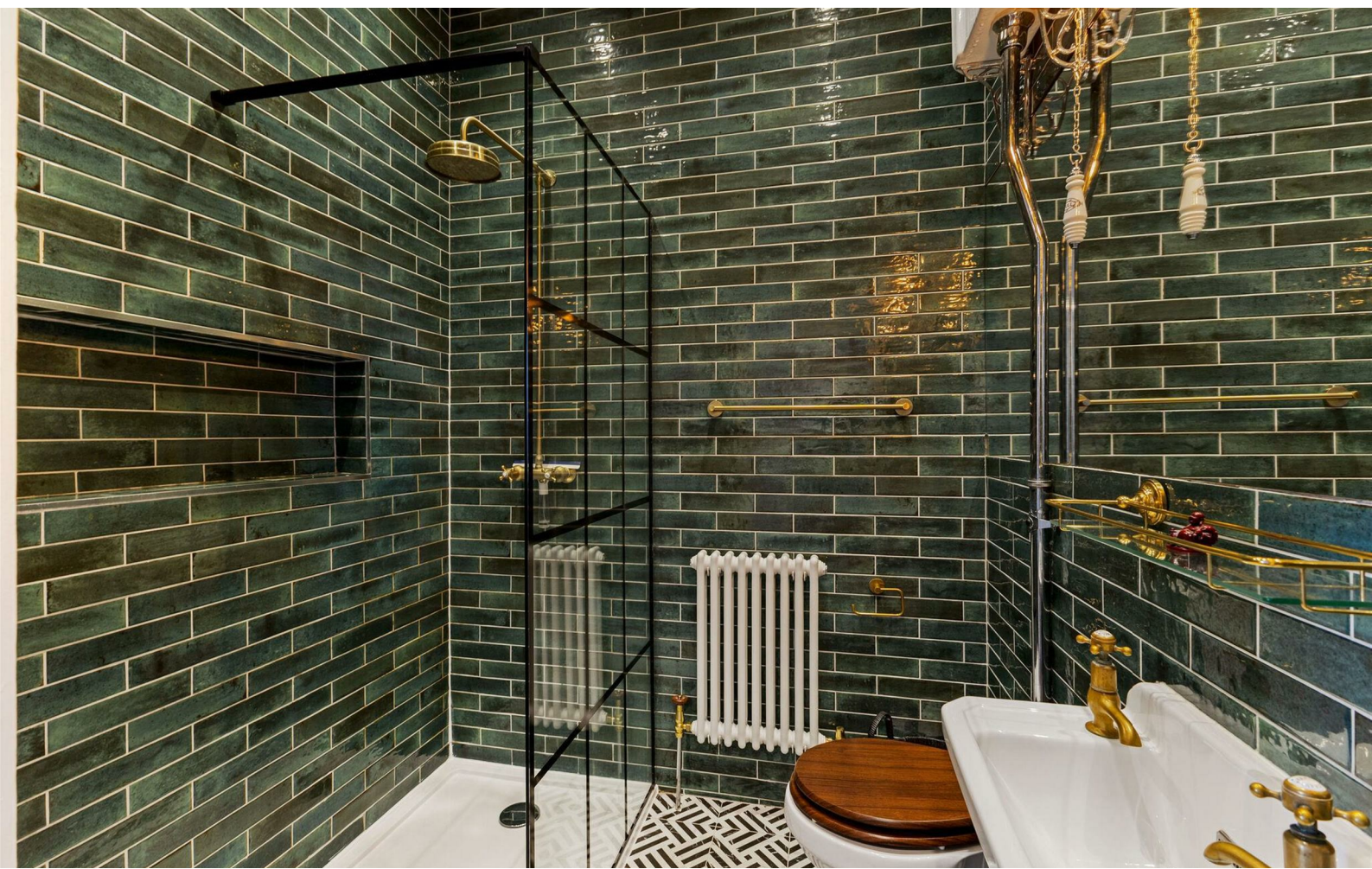


Description

A very bright one-bedroom flat on the first floor of a striking period conversion, located on a sought-after residential street in Notting Hill. The property boasts a large reception room with plantation shutters, an open plan fully fitted kitchen, a large double bedroom with built-in wardrobes, and a modern bathroom.

Cornwall Crescent is within easy reach of the many shops, bars, and restaurants of Notting Hill and Portobello Road. The green open spaces of Holland Park and Kensington Gardens are also close by. Great transport links are available, Ladbroke Grove underground station (Circle, Hammersmith & City lines) and Holland Park underground station (Central line). A number of local bus routes also offer quick and easy access to the City and the West End.

- One Bedroom
- Reception Room
- High Ceilings
- Modern Bathroom
- Kitchen
- EPC - C

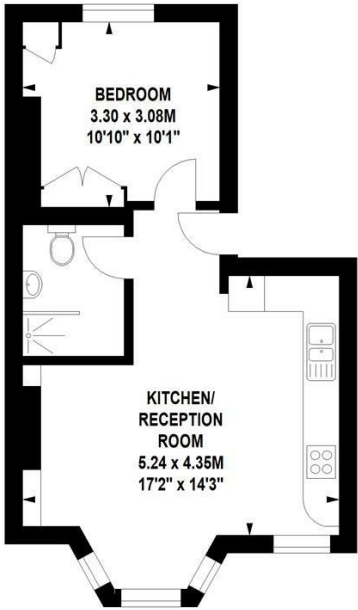




Floor Plan

Cornwall Crescent, W11

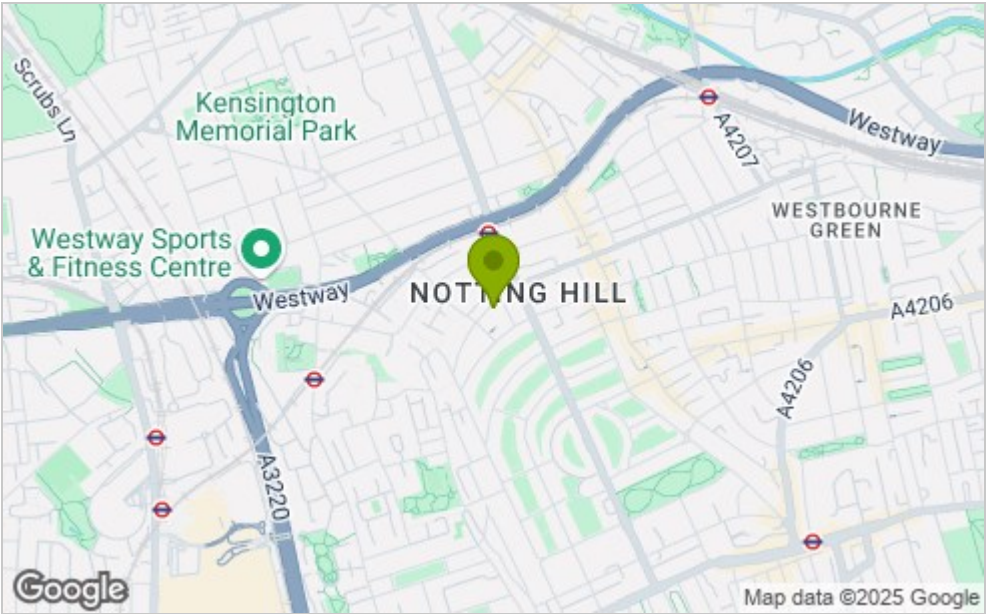
Approximate gross internal area
38.71 sq m / 417 sq ft



First Floor

Although every attempt has been made to ensure accuracy, all measurements are approximate.
This floorplan is for illustrative purposes only and not to scale.
Measured in accordance with RICS standards.

Area Map



Viewing

Please contact our Chatterton Rees Office
on 020 3780 0580 if you wish to arrange a viewing appointment for this property
or require further information.

These particulars, whilst believed to be accurate are set out as a general outline only for guidance and do not constitute any part of an offer or contract. Intending purchasers should not rely on them as statements of representation of fact, but must satisfy themselves by inspection or otherwise as to their accuracy. No person in this firms employment has the authority to make or give any representation or warranty in respect of the property.

Energy Efficiency Graph

